

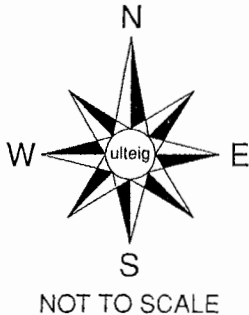
# CERTIFICATE OF LOCATION OF GOVERNMENT CORNER

SOUTH 1/4 Corner of Section 29, Township 105N, Range 42W, 5th P.M.  
STATE OF MINNESOTA, County of MURRAY

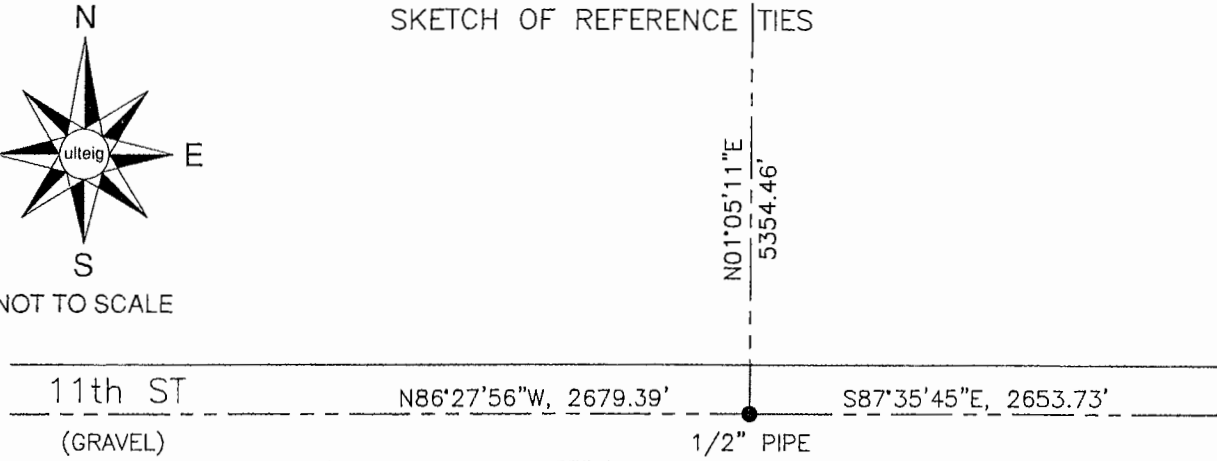
At the corner location shown on the sketch:

On \_\_\_\_\_ found a 1/2" PIPE IN THE ROAD.  
DATE

left monument as found,  lowered monument,  removed monument (explain)  
 On \_\_\_\_\_ placed a \_\_\_\_\_  
DATE



## SKETCH OF REFERENCE TIES



- MONUMENT INPLACE
- MONUMENT SET

N: 648,670.88  
E: 2,119,827.17  
MN SOUTH ZONE  
NAD 83

NO OTHER TIES AVAILABLE  
BEARING SYSTEM IS BASED ON MN, STATE PLANE COORDINATE SYSTEMS, SOUTH ZONE.

Statement of evidence relative to this corner location is on back of page.

I hereby certify that this document and the data contained herein was prepared by me or under my direct supervision.

Thomas V. Jeff  
Thomas V. Jeff

8/23/06  
DATE

Registration No. 44563

- Land Surveyor,  Professional Engineer
- County Surveyor,  County Engineer

## OFFICE OF THE COUNTY RECORDER

County of \_\_\_\_\_

I hereby certify that this document was filed in the Co. Recorders office at \_\_\_\_\_ M. on the \_\_\_\_\_ day of SEP 28 2006 A.D., 20\_\_\_\_

County Recorder James V. Johnson

By \_\_\_\_\_, Deputy

DOCUMENT NO. \_\_\_\_\_

STATEMENT OF EVIDENCE:

SOUTH 1/4 CORNER, SECTION 29, T. 105 N., R. 42 W.,  
MURRAY COUNTY, MINNESOTA

1861 D.W. Wellman & S.S. Smoot, US. Deputy Surveyors, monumented corner.

3/09/2006 Ulteig Engineers, Inc., Survey Crew, Brian Payne Party Chief, found a 1/2" iron pipe in the road.  
Ties: E-2653.73' to SE corner, Section 29;  
W-2679.39' to SW corner, Section 29;  
N-5354.46' to N 1/3 corner, Section 29.